

PART OF THE N. 1/2, SEC. 28, T.7N., R.1E., S.L.B. & M.  
**NIPKO ESTATES**

102

TAXING UNIT: 36

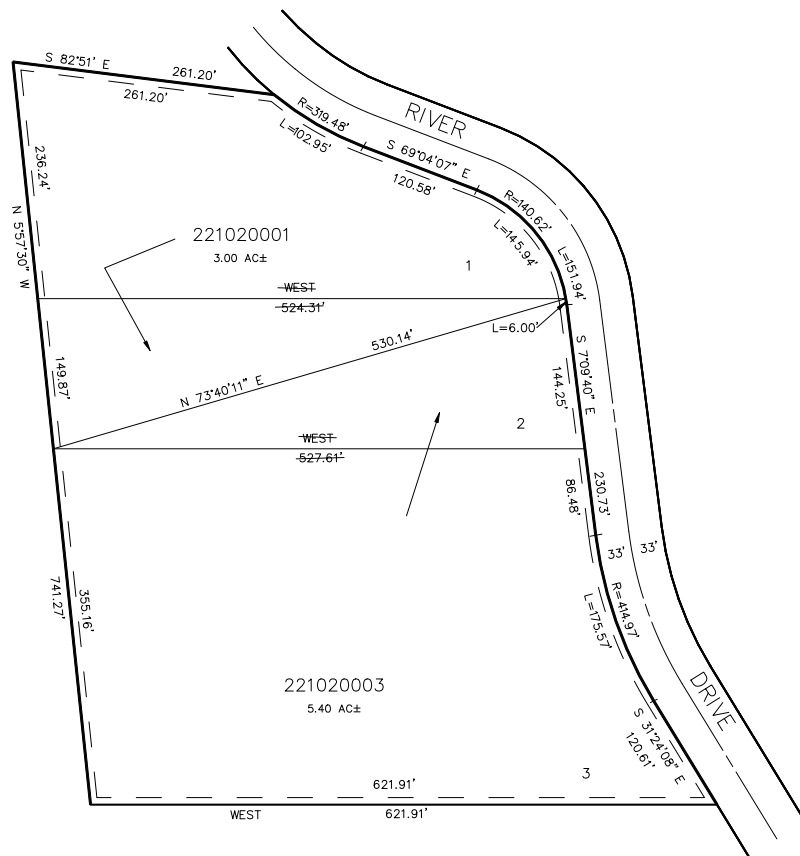
IN WEBER COUNTY

SCALE 1" = 100'

SEE PAGE 22

SEE PAGE 22

SEE PAGE 22



SEE PAGE 22

7' UTILITY & DRAINAGE EASEMENTS EACH  
 SIDE OF PROPERTY LINES AS INDICATED BY  
 DASHED LINES, EXCEPT AS OTHERWISE SHOWN.

FOR COMPLETE ENG DATA SEE  
 ORIGINAL DEDICATION PLAT IN  
 BOOK 31, PAGE 5 OF RECORDS.